



SKYLOFT FACTSHEET

UNIQUE, FLEXIBLE AND INDIVIDUAL

Our SkyLoft offers you everything that makes meeting planners' hearts beat faster: an elegant lobby, a spacious and flexible conference area with workshop rooms as well as a cozy lounge for breather or brainstorming sessions. The open, bright venue concept spreads across two levels and combines exclusive design with modern technology. Hold your meeting, training or evening event in a private atmosphere and enjoy our hospitality.

We plan your event according to your individual wishes.





SKYLOFT

538 sqm in total

LEVEL E2

167 sqm

Gallery with reception

Lounge



LEVEL E1

371 sqm

Conference area

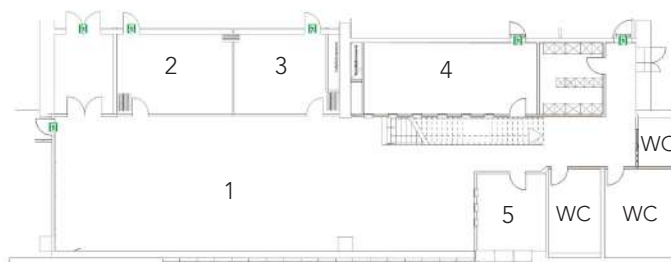
SkyLoft 1

SkyLoft 2

SkyLoft 3

SkyLoft 4

SkyLoft 5



ROOM DIMENSIONS AND SEATING CAPACITY

	DIM. (L x W)	AREA(m ²)	HEIGHT	BLOCK	U-SHAPE	PARLIAMENT	THEATRE	BANQUET	BUFFET*
GALLERY	-	88.00	-	-	-	-	-	-	-
LOUNGE	-	55.00	-	-	-	-	-	-	-
SKYLOFT 1	23.00 x 7.40	172.00	7,00	-	34	72	120	108	84
SKYLOFT 1/2/3 (with stage)	-	220.70	-	-	-	90	140	132	120
SKYLOFT 1/2/3 (without stage)	-	220.70	-	-	-	100	150	156	140
SKYLOFT 2/3	11.30 x 4.30	48.70	3,00	24	26	-	-	-	-
SKYLOFT 4	9.30 x 3.80	35.75	3,00	12	-	-	-	-	-
SKYLOFT 5	4.50 x 3.60	16.22	3,00	8	-	-	-	-	-

*round tables

FRANKFURT AIRPORT MARRIOTT HOTEL

SHERATON FRANKFURT AIRPORT HOTEL & CONFERENCE CENTER

Hugo-Eckener-Ring 15, Airport / Terminal 1,
60549 Frankfurt am Main, Germany

CALL OUR SALES TEAM:

+49.(0)69.6977.8989

OR WRITE AN E-MAIL:

salesFRA@marriott.com

MarriottFrankfurtAirportHotels.com