



YOUR MEETING. LESS ORDINARY.

Say goodbye to the cookie-cutter venue and host an event guests will remember. Say hello to Renaissance® Atlanta Midtown Hotel, in the heart of Atlanta's vibrant Midtown neighborhood. Here, attendees are steps from discovering local boutiques, award-winning restaurants and nightlife that beckons them to Peachtree Street's Midtown Mile. Just two blocks from Midtown Marta Rail Station, events are easy come, easy go. So come over and let's explore.

RENAISSANCE® ATLANTA MIDTOWN HOTEL

866 West Peachtree Street NW, Atlanta GA 30308

t: 678.412.2400 f: 678.412.2401 RenaissanceAtlantaMidtown.com



/RenaissanceAtlantaMidtown



@RenATLMidtown

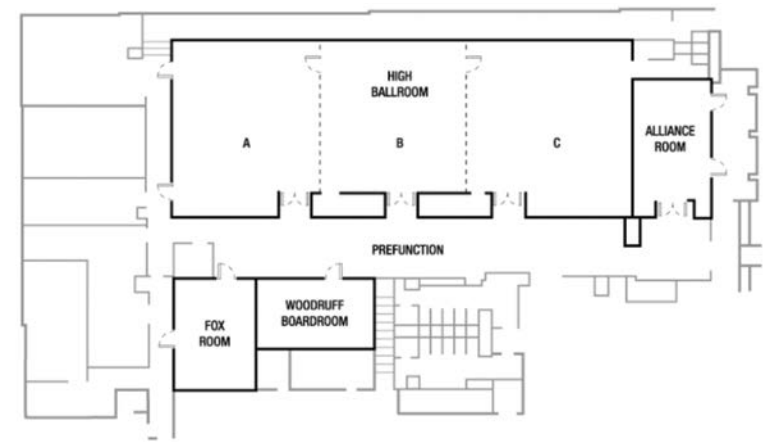


@RenATLMidtown

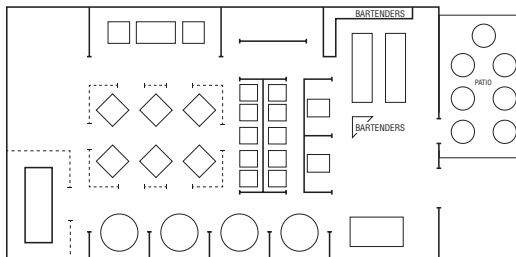
R
RENAISSANCE®
ATLANTA MIDTOWN HOTEL

MEETING ROOM	W×L×H	SQ. FEET	THEATER	SCHOOLROOM	CONFERENCE	U-SHAPE	RECEPTION	BANQUET
High Ballroom	110×42×12	4,450	400	270	—	112	450	272
High Ballroom A and B or B and C	—	2,877	252	180	26	74	300	172
High Ballroom A or C	40×37×12	1,573	126	90	26	38	150	100
High Ballroom B	37×37×12	1,304	117	60	26	36	100	72
Prefunction	—	2,027	—	—	—	—	—	—
Alliance Room	33×18×10	570	56	30	18	21	50	32
Fox Room	27×19×8	500	48	24	24	15	40	32
Woodruff Boardroom	28×17×10	455	—	—	12	—	—	—
Chastain A and B	55×26×8	1,305	110	57	32	—	90	72
Chastain A	29×26×8	690	60	30	24	24	50	40
Chastain B	26×26×8	615	50	27	24	24	40	32
Rialto A and B	55×26×8	1,310	110	57	32	—	90	72
Rialto A	29×26×8	690	60	30	24	24	50	40
Rialto B	26×26×8	620	50	27	24	24	40	32
Community Smith	—	2,100	—	—	—	—	—	98
The Garden	—	5,000	—	—	—	—	—	250

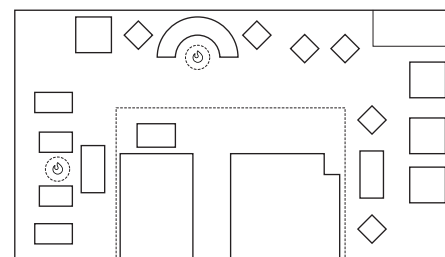
LOBBY LEVEL



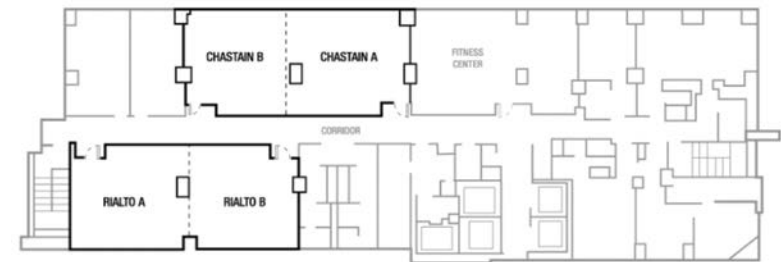
COMMUNITY SMITH - LEVEL 1



THE GARDEN - LEVEL 2



5TH FLOOR



WE ARE HERE

Set in Atlanta's uniquely vibrant Midtown neighborhood • Only blocks from the Georgia Tech campus and beautiful Piedmont Park • Nearby attractions, shopping, dining and entertainment along Peachtree Street's Midtown Mile • 2 blocks from the Midtown Marta Rail Station for easy access

THE DETAILS

21 floors • 287 guest rooms • 17 suites • AAA 4-Diamond rated

THE EXTRAS

High-speed wireless Internet access in guest rooms, public areas and meeting rooms • Complimentary WiFi in the lobby • Pet-friendly • Live music entertainment Thursday through Sunday nights

SIP AND SAVOR

Community Smith, relax over cocktails and sharable plates at a venue that prides itself on responsibly sourced cuisine. Open for breakfast, lunch and dinner • The Garden at Community Smith, seasonal rooftop bar and lounge featuring handcrafted cocktails, beers on tap and light fare. Also available for group events.

A LITTLE FUN AND RELAXATION

Ultra-modern fitness center available 24 hours a day located on the 5th floor • RNavigators, our local experts waiting to bring out the most amazing experiences your destination has to offer • Vibrant Midtown neighborhood shops, dining and entertainment

LOCAL DISCOVERIES

Georgia Tech • Georgia World Congress Center • Fox Theatre • Atlanta Symphony Orchestra • CNN Center • Piedmont Park • Centennial Olympic Park • Philips Arena • Atlantic Station • High Museum of Art • Georgia Aquarium • Fernbank Museum of Natural History • Martin Luther King, Jr. National Historic Site • Center for Puppetry Art • Atlanta Botanical Gardens • World of Coca-Cola • College Football Hall of Fame • Human and Civil Rights Museum • Mercedes Benz Stadium – Home of the Atlanta Falcons and Atlanta United FC

THE PLACE TO MEET

Over 18,000 square feet of total event space • 6 meeting rooms • Private event space at The Garden at Community Smith • Largest room is the 4,450 square-foot High Ballroom with maximum seating capacity of 450 • Maximum of 10 breakout meeting rooms