



---

# INTIMATE EVENTS. GRAND EXPERIENCES.

Discover the comforts of one of the premier hotels in Bethesda, MD with a stay at the prominent Bethesda North Marriott Hotel & Conference Center. A completed \$25-million transformation now offers guests stylish guest rooms, and 60,000 square feet of high-tech event space, state of the art fitness center, M Club, The Corby Kitchen Restaurant + Bar welcome both business and leisure travelers with everything needed for a remarkable hotel experience.



# HAPPILY EVER AFTERS AND JOYFUL CELEBRATIONS

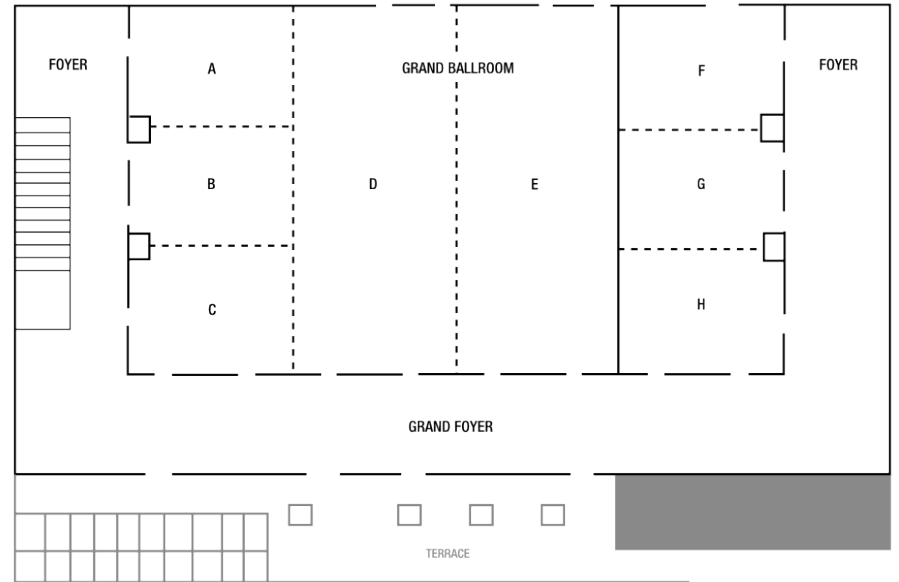
From the intimate to the lavish, there's no better place to begin your wedding or epic event than the Bethesda North Marriott Hotel & Conference Center. Whether a lavish celebration or a more intimate affair, our newly renovated event space provides the ideal backdrop for romantic sophistication. Our extraordinary team will help bring your vision to reality, and traveling guests will be enamored with guest rooms that combine modern style with world-class amenities resulting in a comfortable and memorable stay.



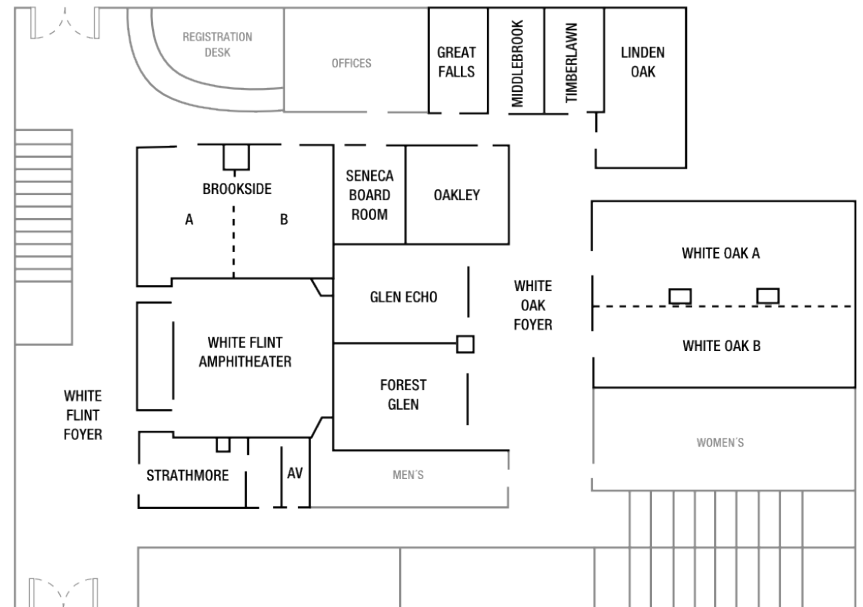
MEETING ROOM	DIMENSIONS		CAPACITY					
	W x L x H	Sq. Ft.	Theater	Schoolroom	Conference	U-Shape	Reception	Banquet
GRAND BALLROOM	209x112x23	23,408	2500	1520	—	—	2500	1620
GRAND FOYER	0x0x0	10,500	—	—	—	—	—	—
SALON A,B,C,F,G,OR H	52x37x23	1,924	194	128	46	50	200	120
SALON D ORE	52x112x23	5,824	594	360	—	—	600	400
SALON DE	112x105x23	11,760	1188	720	—	—	1200	800
SALON A-D ORE-H	105x112x23	11,760	1169	685	—	—	1200	760
SALON A-E ORD-H	156x112x23	17,472	1800	1050	—	—	1800	1160
SALON A-C OR F-H	52x112x23	5,824	575	325	—	—	575	360
BROOKSIDE	61x33x13	2,013	224	108	50	51	150	120
BROOKSIDE A OR B	31x33x13	1,023	102	48	28	27	75	50
WHITE OAK	54x76x11	4,104	400	—	—	—	400	310
WHITE OAK A	76x28x11	2,128	185	112	60	60	200	140
WHITE OAK B	76x26x11	1,976	185	112	60	60	200	140
WHITE OAK FOYER	65x23x13	1,495	—	—	—	—	—	—
SENECA BOARDROOM	32x27x13	864	18	—	18	—	—	—
OAKLEY	24x27x13	648	45	30	20	21	50	40
GLEN ECHO	31x41x13	1,271	127	72	34	36	90	80
FOREST GLEN	41x31x13	1,271	127	72	34	36	90	80
GREAT FALLS	28x17x13	476	36	28	20	18	36	30
MIDDLEBROOK	28x17x13	476	36	28	20	18	36	30
TIMBERLAWN	28x17x13	476	36	28	20	18	36	30
LINDEN OAK	43x25x13	1,075	90	62	36	39	90	80
WHITE FLINT AMPHITHEATER	70x50x13	3,500	120	120	—	—	—	—
WHITE FLINT FOYER	117x36x13	2,530	—	—	—	—	—	—
STRATHMORE ROOM	32x16x13	512	6	—	6	—	—	—
TERRACE	0x0x0	6,800	600	—	—	—	600	560



MAIN LEVEL



LOWER LEVEL





## BETHESDA NORTH MARRIOTT HOTEL & CONFERENCE CENTER

5701 Marinelli Road  
North Bethesda, Md 20852  
T: 301.822.9200

Bethesdanorthmarriott.com

@BethesdaNorthMarriott

@BethesdaNorthMarriott

### LOCATION

Located in one of Washington, DC's surrounding suburbs, our hotel is close enough to all that you want to see; yet more comfortable and accessible than other metropolitan locations. Adjacent to the Metrorail's Red Line, the entire greater Washington, DC area is just 4 metro stops away. With our proximity to the I-270 Technology Corridor and the restaurants and activities of downtown Bethesda, our hotel is the perfect location for both work and play. The possibilities are endless.

### ACCOMMODATIONS

455 Guest Rooms • 4 Hospitality Suites • 17 Accessible Guest Rooms • 9 Doubles and 8 Kings • 14 overall suites • 1 Presidential Suite • 1 Vice Presidential Suite • 12 Standard Suites • Marriott Revive® Bedding Package • Plug In Technology Panel • In-Room Pay Movies • Room Amenities; Safe, Mini fridge • 55 inch TV • 10 USB plugs • Internet Browser/Web TV • Individual Climate Control • AM/FM Alarm Clock Radio • In-Room Safe • Smoke Free Policy in all Guestrooms & Public Spaces

### ATTRACTIONS

Pike & Rose Dining & Shopping Center • The Music Center at Strathmore • Downtown Bethesda • Washington, DC Monuments & Attractions • National Zoo

### GUEST SERVICES

Business Center Service at Reception Desk • 24 hour modern fitness center, featuring Peloton bikes • The Corby Kitchen, our hotel restaurant, for delicious, locally sourced, Chesapeake Bay regional cuisine • The Corby Market, grab and go hot and cold snacks, sandwiches and beverages. Featuring Illy coffee • MClub Lounge, for exclusively for our Bonvoy Platinum and above Elite members • On-site laundry • Cash machine/ATM • Valet dry cleaning • Mobility accessible rooms

### MEETING & BANQUET FACILITIES

23 Event Spaces, over 60,000 sq. ft. of Total Meeting Space • Largest Meeting Room is Grand Ballroom with Maximum Meeting Space of 23,408 sq. ft. and Maximum Seating Capacity of 2,500 • White Flint Amphitheater has Stadium Seating for 120 • Meeting Rooms with High-Speed Internet Access

