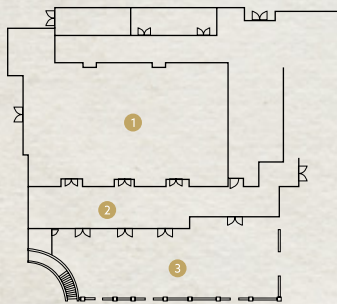


# CAPACITY CHART & FLOOR PLANS

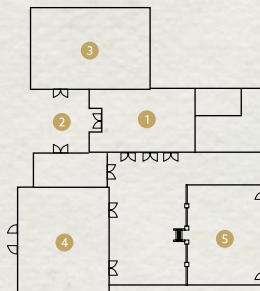
MEETING ROOM	SQ. FT.	THEATER	CLASSROOM	BANQUET	CONFERENCE	U-SHAPE	HOLLOW SQUARE	RECEPTION
Mountain Brook Ballroom	5,759	624	324	360	84	96	96	649
Mountain Brook Ballroom Pre-Function	2,314	-	-	-	-	-	-	267
Mountain Brook I	1,920	166	108	112	42	45	48	202
Mountain Brook I & II	3,842	374	216	256	54	66	78	403
Mountain Brook II	1,922	168	108	112	42	45	48	202
Mountain Brook II & III	3,862	374	216	256	54	66	78	406
Mountain Brook III	1,938	168	108	112	42	45	48	204
Gallery I	987	80	40	60	25	20	30	80
Gallery II	480	30	10	20	8	6	8	30
Kessler Boardroom	511	-	-	-	12	-	-	-
Exterior Courtyard	3,915	-	-	-	-	-	-	412
Private Dining Room	962	-	-	40	40	-	-	80
Billiards Room	790	-	-	-	-	-	-	35

\*Floor plans are not shown to scale.

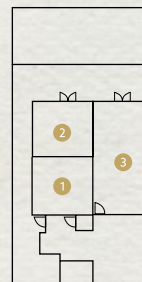
**1ST FLOOR:** 1. MOUNTAIN BROOK BALLROOM  
2. MOUNTAIN BROOK BALLROOM  
PRE-FUNCTION 3. EXTERIOR COURTYARD



**1ST FLOOR:** 1. LOBBY 2. ENTRANCE  
3. POSEIDON SPA 4. GRAND BOHEMIAN  
ART GALLERY 5. POOL



**2ND FLOOR:** 1. KESSLER  
BOARDROOM 2. GALLERY I  
3. GALLERY II



**3RD FLOOR:** 1. ROOFTOP BAR 2. HABITAT FEED & SOCIAL  
3. TERRACE 4. WINE BLENDING ROOM 5. WINE TASTING ROOM 6. COOKING SCHOOL  
7. PRIVATE DINING ROOM 8. BILLIARDS ROOM

