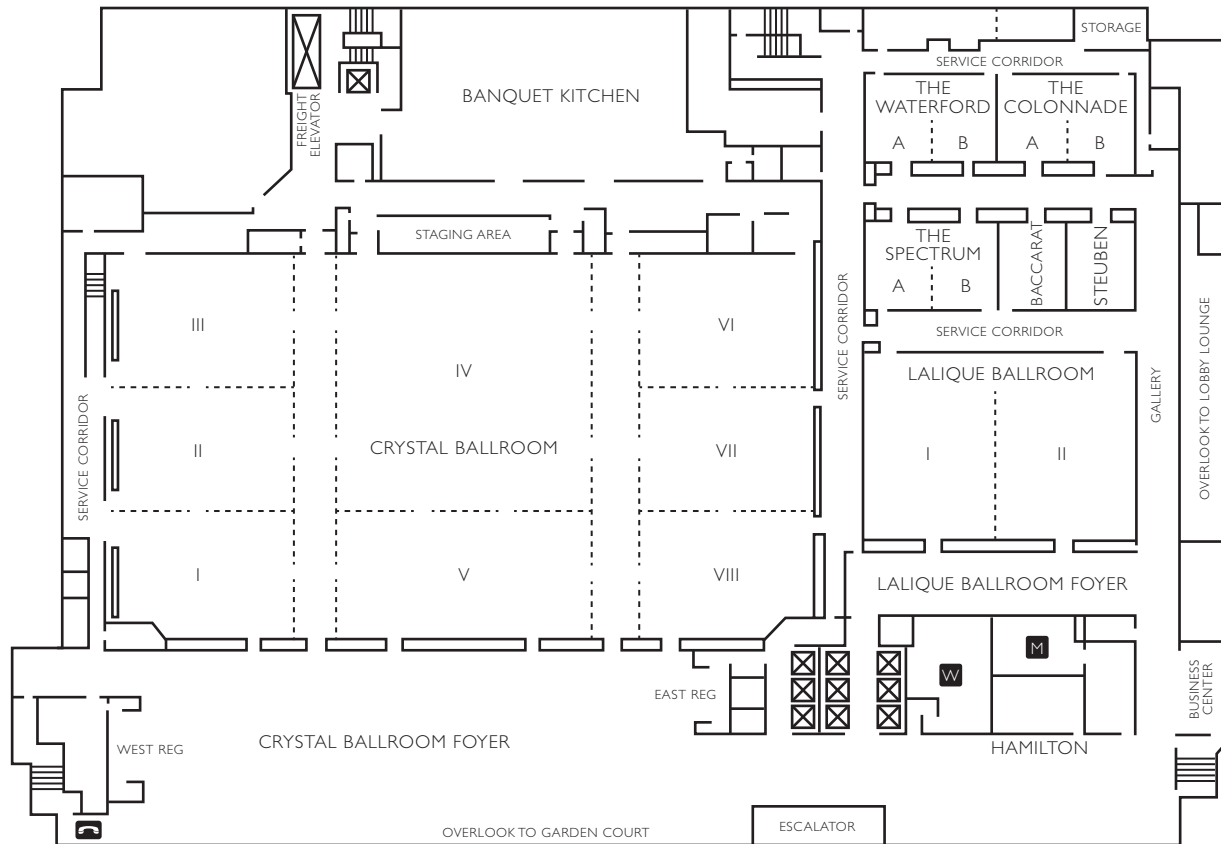


RENAISSANCE DALLAS ADDISON HOTEL

BALLROOM LEVEL



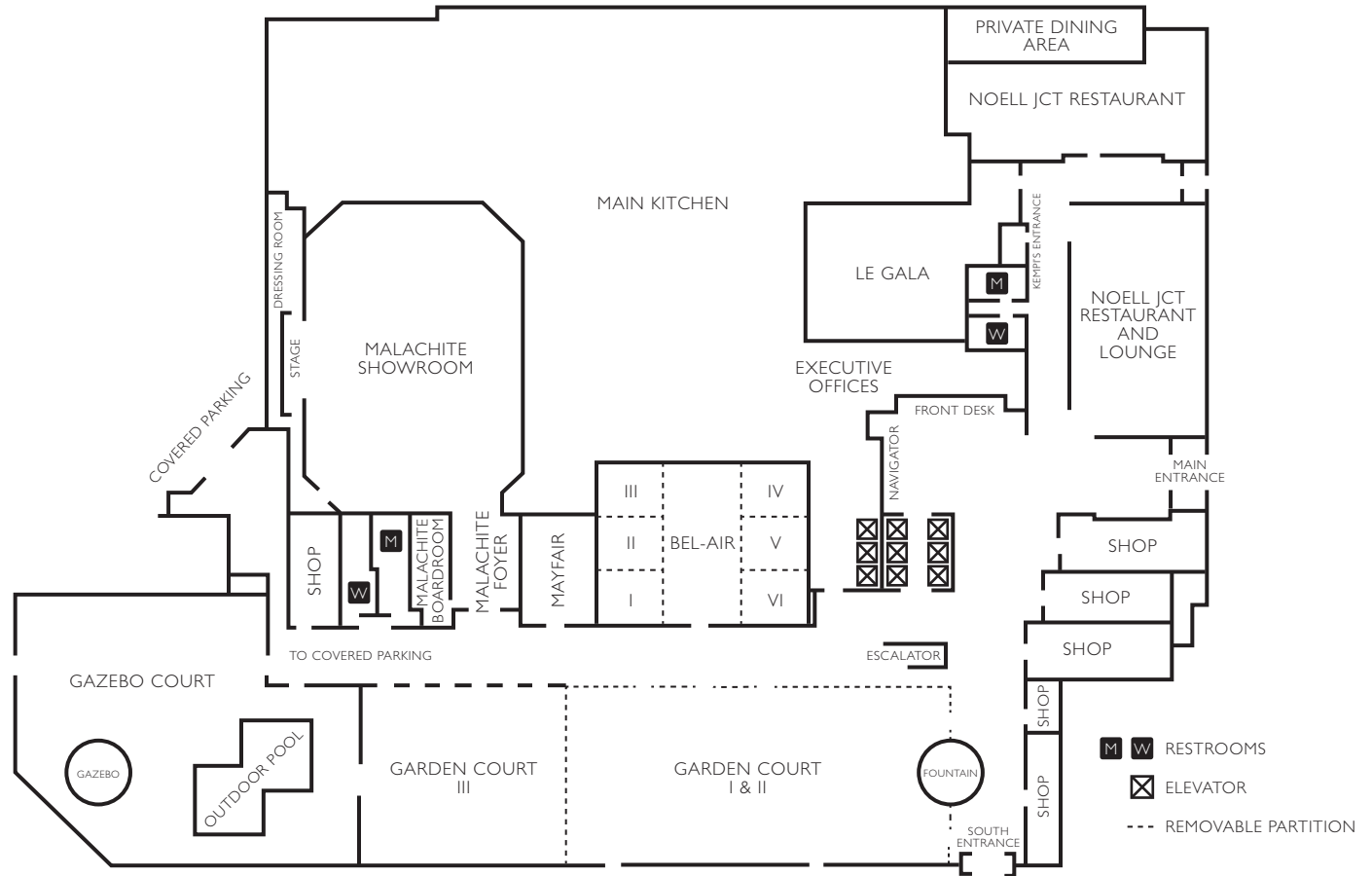
- M W RESTROOMS
- X ELEVATOR
- ☎ PHONE
- REMOVABLE PARTITION

BALLROOM LEVEL

CAPACITIES AND DIMENSIONS	TOTAL SQ. FT.	LENGTH & WIDTH	CEILING HEIGHT	*THEATER	*CLASSROOM	CONFERENCE	U-SHAPE	BANQUET	RECEPTION	EXHIBITS (8' x 10')
Crystal Ballroom	25,400	220' x 116'	26'	3,000	1,700	—	—	2,500	3,000	150
Section I	2,090	55' x 38'	26'	210	100	60	48	180	200	—
Section II	2,090	55' x 38'	26'	210	100	60	48	180	200	—
Section III	2,090	55' x 38'	26'	210	100	60	48	180	200	—
Section IV	6,000	75' x 80'	26'	720	360	75	72	420	400	—
Section V	3,040	38' x 80'	26'	300	180	60	54	240	300	—
Section VI	2,090	55' x 38'	26'	210	100	60	48	180	200	—
Section VII	2,090	55' x 38'	26'	210	100	60	48	180	200	—
Section VIII	2,090	55' x 38'	26'	210	100	60	48	180	200	—
Staging Area	715	55' x 13'	26'	—	—	—	—	—	—	—
East Corridor	1,482	114' x 13'	—	—	—	—	—	—	—	—
West Corridor	1,482	114' x 13'	—	—	—	—	—	—	—	—
Crystal Ballroom Foyer	10,000	—	12'	—	—	—	—	—	500	64
Hamilton	450	25' x 18'	10'	—	—	—	—	—	—	—
Lalique Ballroom	4,560	80' x 57'	12'	400	250	—	55	400	400	25
Section I	2,280	40' x 57'	12'	200	120	50	48	200	200	—
Section II	2,280	40' x 57'	12'	200	120	50	48	200	200	—
Lalique Ballroom Foyer	2,000	95' x 21'	12'	—	—	—	—	—	200	—
CONFERENCE ROOMS										
The Waterford	1,100	40' x 28'	10'	100	60	40	30	80	100	—
Section A	560	20' x 28'	10'	50	30	20	20	40	50	—
Section B	560	20' x 28'	10'	50	30	20	20	40	50	—
The Colonnade	1,100	40' x 28'	10'	100	60	40	30	80	100	—
Section A	560	20' x 28'	10'	50	30	20	20	40	50	—
Section B	560	20' x 28'	10'	50	30	20	20	40	50	—
The Spectrum	1,100	40' x 28'	10'	100	60	40	30	80	100	—
Section A	560	20' x 28'	10'	50	30	20	20	40	50	—
Section B	560	20' x 28'	10'	50	30	20	20	40	50	—
The Baccarat Room	560	20' x 28'	10'	50	30	20	20	40	50	—
The Steuben Room	560	20' x 28'	10'	50	30	20	20	40	50	—

*Capacities include a head table, projector and screen.

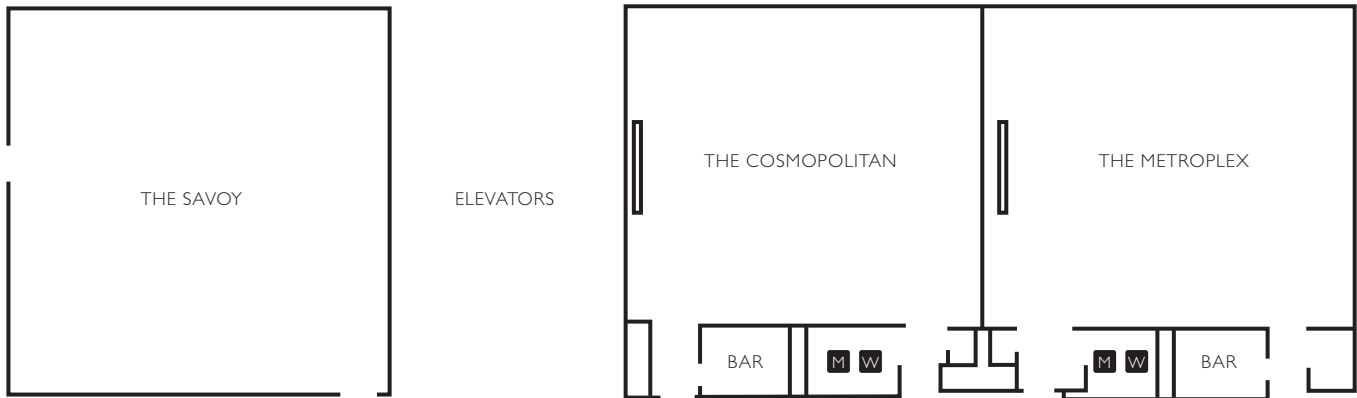
LOBBY LEVEL



CAPACITIES AND DIMENSIONS	TOTAL SQ. FT.	LENGTH & WIDTH	CEILING HEIGHT	*THEATER	*CLASSROOM	CONFERENCE	U-SHAPE	BANQUET	RECEPTION	EXHIBITS (8' x 10')
LOBBY LEVEL										
Garden Court	14,055	215' x 66'	—	1,450	875	—	—	1,100	1,400	77
Garden Court I, II	8,775	135' x 66'	—	1,000	600	—	—	700	1,000	51
Garden Court III	5,230	80' x 66'	—	450	275	—	—	350	400	26
Malachite Showroom	10,000	—	11', 13', 18'	700	350	—	—	500	500	—
Malachite Boardroom	400	31' x 13'	8'	—	—	12	—	—	—	—
Le Gala	3,038	61' x 48'	10'	264	90	48	42	160	300	—
Private Dining Area	1,080	54' x 20'	8'	—	—	30	30	78	120	—
Bel-Air	4,680	60' x 78'	10'	225	168	40	40	360	400	—
Section I	600	20' x 30'	10'	35	28	20	18	40	50	—
Section II	600	20' x 30'	10'	35	28	20	18	40	50	—
Section III	600	20' x 30'	10'	35	28	20	18	40	50	—
Section IV	600	20' x 30'	10'	35	28	20	18	40	50	—
Section V	600	20' x 30'	10'	35	28	20	18	40	50	—
Section VI	600	20' x 30'	10'	35	28	20	18	40	50	—
Mayfair	1,189	41' x 29'	10'	100	60	40	30	80	100	—
Gazebo Court (outdoor)	—	—	—	—	—	—	—	200	250	—

*Capacities include a head table, projector and screen.

THIRD FLOOR



CAPACITIES AND DIMENSIONS	TOTAL SQ. FT.	LENGTH & WIDTH	CEILING HEIGHT	*THEATER	*CLASSROOM	CONFERENCE	U-SHAPE	BANQUET	RECEPTION
The Savoy	374	22' x 17'	10'	30	18	14	12	—	—
The Cosmopolitan	500	25' x 20'	8'	45	30	20	20	40	50
The Metroplex	500	25' x 20'	8'	45	30	20	20	40	50
The Addison Hospitality Suite	1,026	54' x 19'	8'	80	45	25	28	60	90

*Capacities include a head table, projector and screen.

