



ST. PANCRAS RENAISSANCE WELCOMES YOU TO THE **KING'S CROSS** NEIGHBOURHOOD HOTEL LONDON

Just steps outside the iconic hotel doors lies a growing mecca of restaurants, bars, museums, galleries, theatres and so much more for the aspiring adventurer.

### A RICH HISTORY



1873

The first guests stay at the hotel formerly known as The Midland Grand.



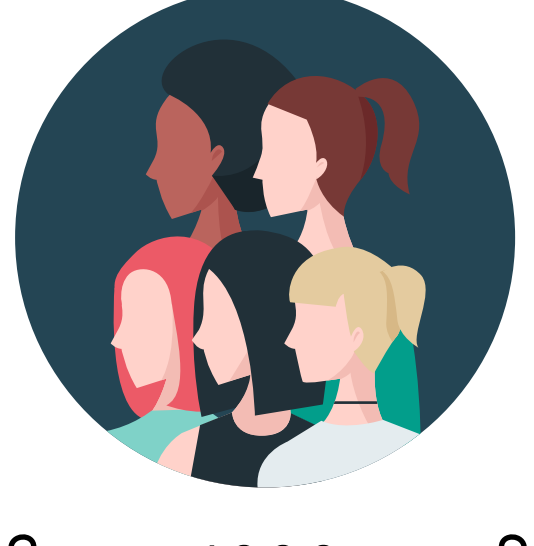
1870s

The Corridors and Grand Staircase were designed to be wide, so ladies in Victorian dress could pass by easily.



1880

The large, oil on canvas painting, called 'The Garden of Deduit,' on the 1st floor of the Grand Staircase was painted by Thomas Wallace Hay.

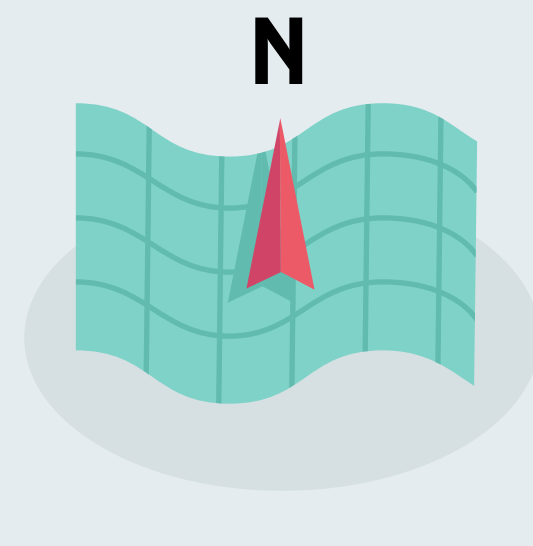


1996

The Spice Girls dance to "Wannabe" on the hotel's Grand Staircase.

### LONDON'S RENASCENT CENTRE FOR FOOD, ART, FASHION AND HISTORY.

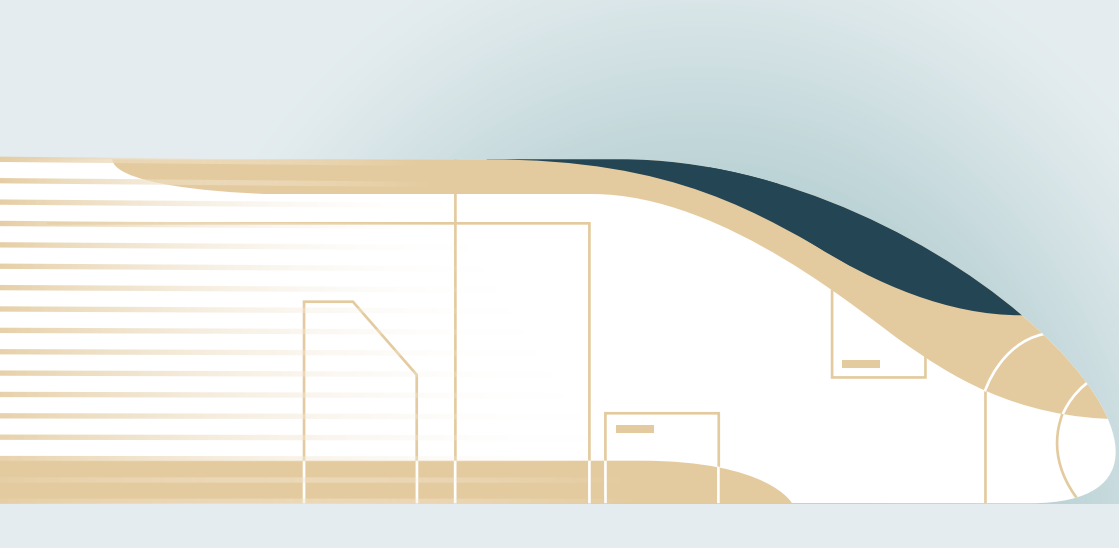
The St. Pancras Renaissance Hotel London sits minutes away from some of the newest eateries in the city as well as a glimpse of London's extensive canal network visitors can explore.



- RESTAURANTS**
- 1 Granary Square Brasserie
- 2 Dishoom
- 3 Mildreds
- 4 The Lighterman
- 5 German Gymnasium
- MUSEUMS & GALLERIES**
- 6 London Canal Museum
- 7 Charles Dickens Museum
- 8 House of Illustration
- 9 Central St Martins
- 10 The British Library
- BARS**
- 11 Drink, Shop & Do
- 12 Simmons
- 13 Vinoteca
- 14 The Booking Office
- 15 Spiritland
- SHOPS**
- 16 Harry Potter Shop
- 17 Chanel
- 18 Ted Baker
- 19 Coal Drops Yard
- 20 Carhartt



### A FEW KING'S CROSS GEMS



#### EUROSTAR

Eurostar's record-breaking travel times, frequent departures, and options for every traveller's budget favour offbeat excursions. Suitably situated, trains religiously arrive and depart from the London St. Pancras International station and carry individuals to Paris, Brussels, Marseille, Amsterdam and many more destinations.



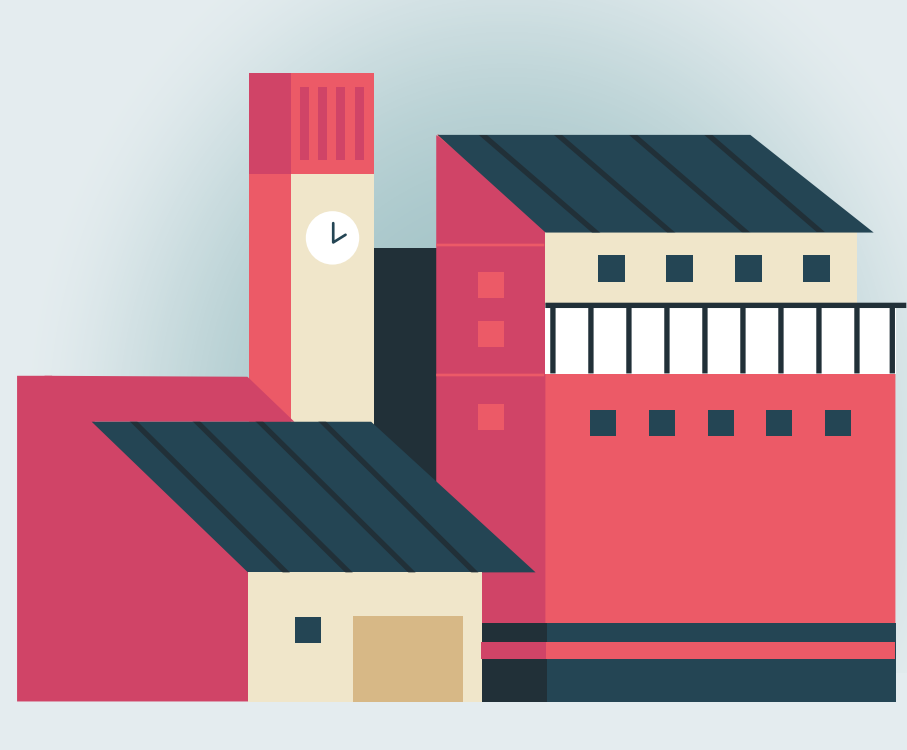
#### SPIRITLAND

Connect with music the way the artist intended at Spiritland. The space is a café and work space by day, an intimate bar at night. Hosting a world-class sound system and a radio production suite, Spiritland is a music lover's must-see.



#### CENTRAL ST. MARTINS

One of the country's premier art and design schools, Central St. Martins' roots in fashion, theatre and fine art go back to 1854. It also contains a museum with collections that go back even further — visitors are welcome to explore and draw inspiration from exhibitions that span the 13th century to the present.



#### THE BRITISH LIBRARY

The British Library is the UK's national library and the largest library in the world by number of items catalogued. Among its 170 million items are world treasures including: Magna Carta, Shakespeare's First Folio, Beatles lyrics handwritten by John Lennon, and drawings from Leonardo's Da Vinci's notebook.



EST. 1873  
**ST. PANCRAS**  
 RENAISSANCE® HOTEL  
 LONDON

WEBSITE:  
[stpancrasrenaissance.co.uk](http://stpancrasrenaissance.co.uk)  
 PHONE:  
 +44-20-7841 3540  
 ADDRESS:  
 Euston Road London, England  
 NW1 2AR United Kingdom