

#### GUEST SERVICES

Complimentary garage parking • Complimentary wireless Internet access in guest rooms and public spaces • Concierge services • Business services • Room safes • Valet dry-cleaning • Gift shop • Guest laundry • Shuttle service

#### ACCOMMODATIONS

5 floors • 237 guest rooms including 31 VIP Suites Concierge level • Complimentary high-speed wired and wireless Internet access in guest rooms • Marriott's Revive® Bedding • 42" flat-panel HDTV • Smoke-free hotel policy

#### RESTAURANTS AND LOUNGES

There's nothing common about The Common, a dynamic academia-inspired casual pub featuring sophisticated style and delicious substance. Great minds gather here to enjoy regionally inspired food and libations, connect with free Wi-Fi, catch a game with friends or dine under the stars in our intimate courtyard.

We offer a menu that embraces the spirit of classic pub fare with creative entrées, fresh salads, hearty sandwiches and tempting snacks.

#### RECREATION & LEISURE

New 24-hour state-of-the-art fitness center (on-site) • Jogging (nearby) • Golf (nearby) • Tennis (nearby) • Spa services (nearby)

#### ATTRACTIONS

University of Maryland, College Park • Clarice Smith Performing Arts Center • University of Maryland Golf Course • UMGC's Maryland Artist Collection • College Park Aviation Museum • The FDA at White Oak • M Square- UM Research Park • The National Archives at College Park • NASA Goddard Center • FedEx Field • Fort Meade • Smithsonian National Zoological Park • US Capital

#### MEETING FACILITIES

First LEED-certified hotel in the country-sustainable site development, water and energy efficiency, quality materials and indoor environment • Marriott Green Meetings • 35 meeting rooms • Over 40,000 square feet of meeting space • 8,122 square-foot Chesapeake Ballroom accommodating up to 900 for theater • 6,500 square-foot General Vessey Ballroom accommodating 646 for theater • Executive boardroom • Satellite/Webcasting • Complimentary wired and wireless high-speed Internet access • Videoconferencing and audio-visual services • Dedicated Event Services Manager to handle all of your meeting and special event needs • Unique meeting packages • A selection of creative, custom menu options • Conference Dining Room



## GREEN NEVER LOOKED SO GOOD

Our hotel is designed to be green and efficient by utilizing sustainable materials and energy-saving systems. With over 40,000 square feet of event space, meeting planners have the flexibility to divide any work flow into 35 meeting rooms. Combined with our signature Marriott service, convenient location and competitive meeting packages, we're a natural choice for meetings and events in Prince George's County. And we're just 10 miles from downtown Washington, D.C.



College Park Marriott Hotel & Conference Center  
3501 University Blvd East,  
Hyattsville, Maryland 20783 USA +1 301-985-7300

MEMBER OF MARRIOTT BONVOY™

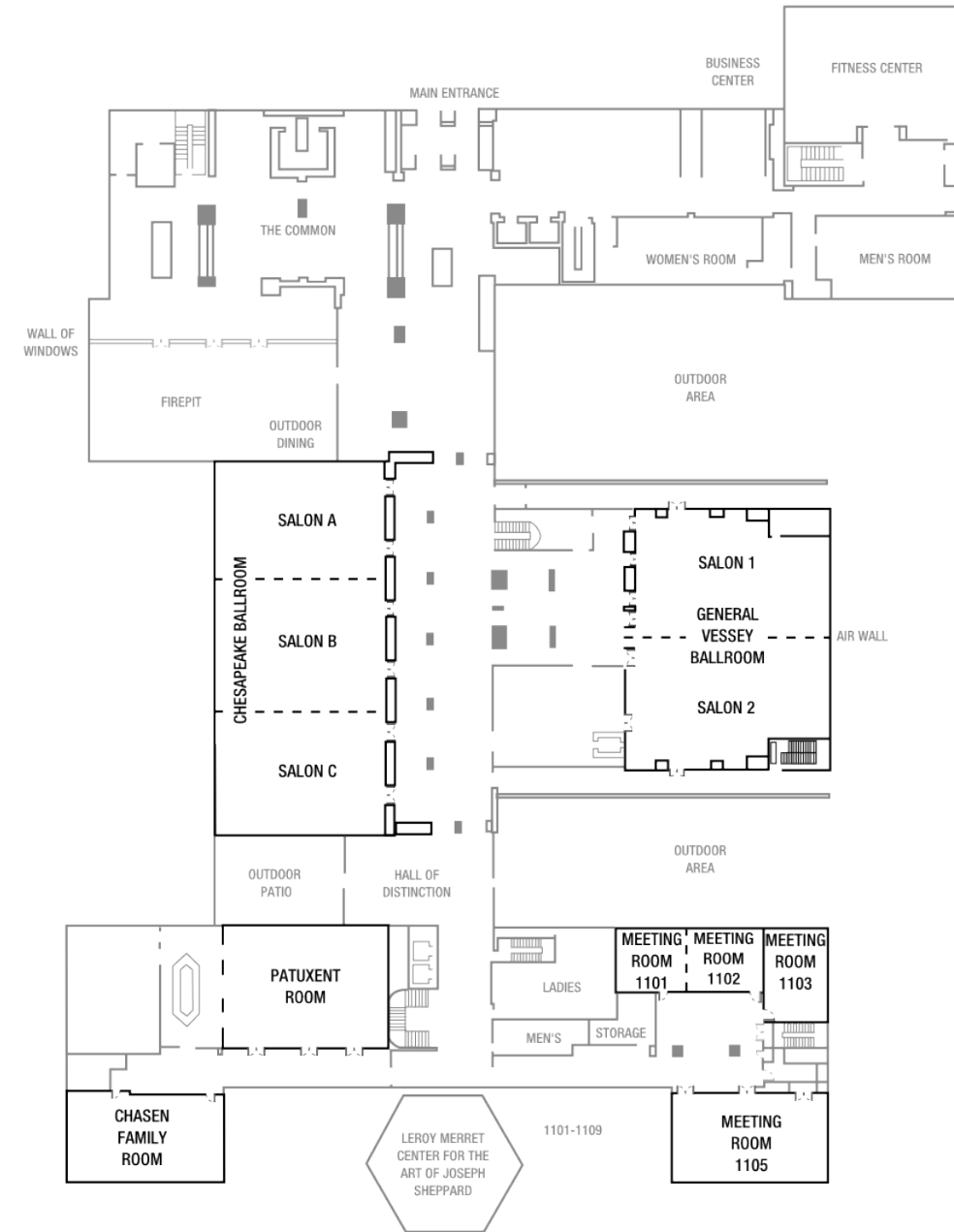
# MEETING & EVENT SPACES

The property boasts over 40,000 square feet of event space, including boardrooms, sophisticated ballrooms, a sculpture gallery and a chic art gallery. The hotel can easily accommodate big groups or intimate gatherings. Seat up to 910 guests in our elegant Chesapeake Ballroom, superb high-speed Wi-Fi, audiovisual, catering and planning services.

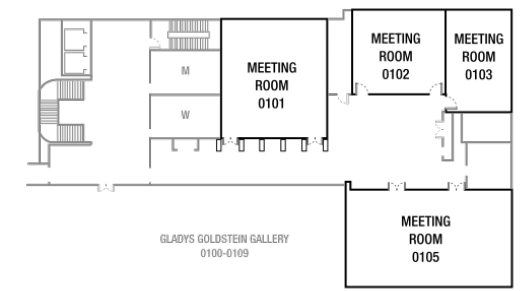


MEETING ROOM	DIMENSIONS		CAPACITY					
	W x L x H	Sq. Ft.	Theater	Schoolroom	Conference	U-Shape	Reception	Banquet
0101	38x35x10	1,330	142	72	30	33	110	90
0102	27x30x10	810	70	36	24	24	60	40
0103	28x21x10	588	60	24	18	18	60	40
0105	30x53x10	1,590	180	90	36	45	120	100
Lower Level Art Gallery	158x22x0	3,476	220	—	—	—	220	100
Chasen	29x53x10	1,537	50	—	32	—	220	100
1101	19x23x10	437	40	18	12	12	25	30
1102	22x28x10	616	60	27	18	18	35	40
1101/1102	21x52x10	1,092	100	54	36	42	60	60
1103	28x21x10	588	54	24	18	18	35	40
1105	31x53x10	1,643	180	90	36	45	140	120
Patuxent	59x39x10	2,301	285	120	48	57	165	140
Chesapeake Ballroom	62x131x16	8,122	910	540	108	132	700	650
Chesapeake Salon A	62x42x16	2,604	330	165	48	57	220	200
Chesapeake Salon B	62x47x16	2,914	330	165	48	57	220	200
Chesapeake Salon C	62x42x16	2,604	330	165	48	57	220	200
Chesapeake Salon A/B	62x89x16	5,518	624	360	66	75	420	400
Chesapeake Salon B/C	62x89x16	5,518	624	360	66	81	420	400
General Vessey Ballroom	77x91x16	6,514	640	414	60	75	450	400
General Vessey 1	47x77x16	3,250	320	210	60	66	225	210
General Vessey 2	47x77x16	3,250	320	210	60	66	225	210
2100/2101/2102	36x66x10	2,376	200	90	36	42	150	130
2101/2102	36x44x10	1,584	154	72	30	39	110	90
2100	22x22x10	484	40	18	12	12	25	40
2101	36x22x10	792	88	36	24	24	60	60
2102	36x22x10	792	88	36	24	24	60	60
2104	20x32x10	640	60	30	24	24	35	40
2105	20x20x10	400	32	12	12	12	15	20
2106	28x20x10	560	70	27	18	18	35	40
2108	20x24x10	480	44	18	18	18	25	40
2110/2111/2112	39x59x10	2,301	270	144	48	54	180	150
2110/2111	39x40x10	1,560	170	87	60	60	110	90
2111/2112	39x40x10	1,560	170	87	60	60	110	90
2110	20x39x10	780	80	42	30	30	65	50
2111	20x39x10	780	80	42	30	30	65	50
2112	20x39x10	780	80	42	30	30	65	50
2115	32x29x10	928	96	48	24	24	75	60
2116	22x32x10	704	60	24	24	24	35	40
Boardroom 2118	19x24x10	456	14	—	14	—	—	—
Munich Garden	—	—	200	—	—	—	200	200
Sheppard Patio	—	—	400	—	—	—	400	400
1301	32x25x10	800	60	30	18	23	65	40
1307	27x31x10	837	50	24	18	18	65	40
1308	27x31x10	837	50	24	18	18	65	40
1309	24x31x10	744	50	24	18	18	55	40
1310	24x31x10	744	50	24	18	18	55	40
1311	49x23x10	1,127	80	48	36	36	85	80
1312	49x23x10	1,127	80	48	36	36	85	80

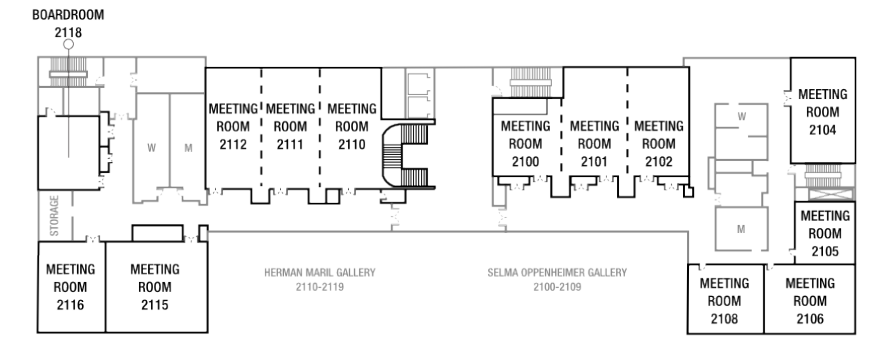
## CONFERENCE BUILDING MAIN LEVEL



## CONFERENCE BUILDING LOWER LEVEL



## CONFERENCE BUILDING SECOND LEVEL



## HOTEL BUILDING MAIN LEVEL

